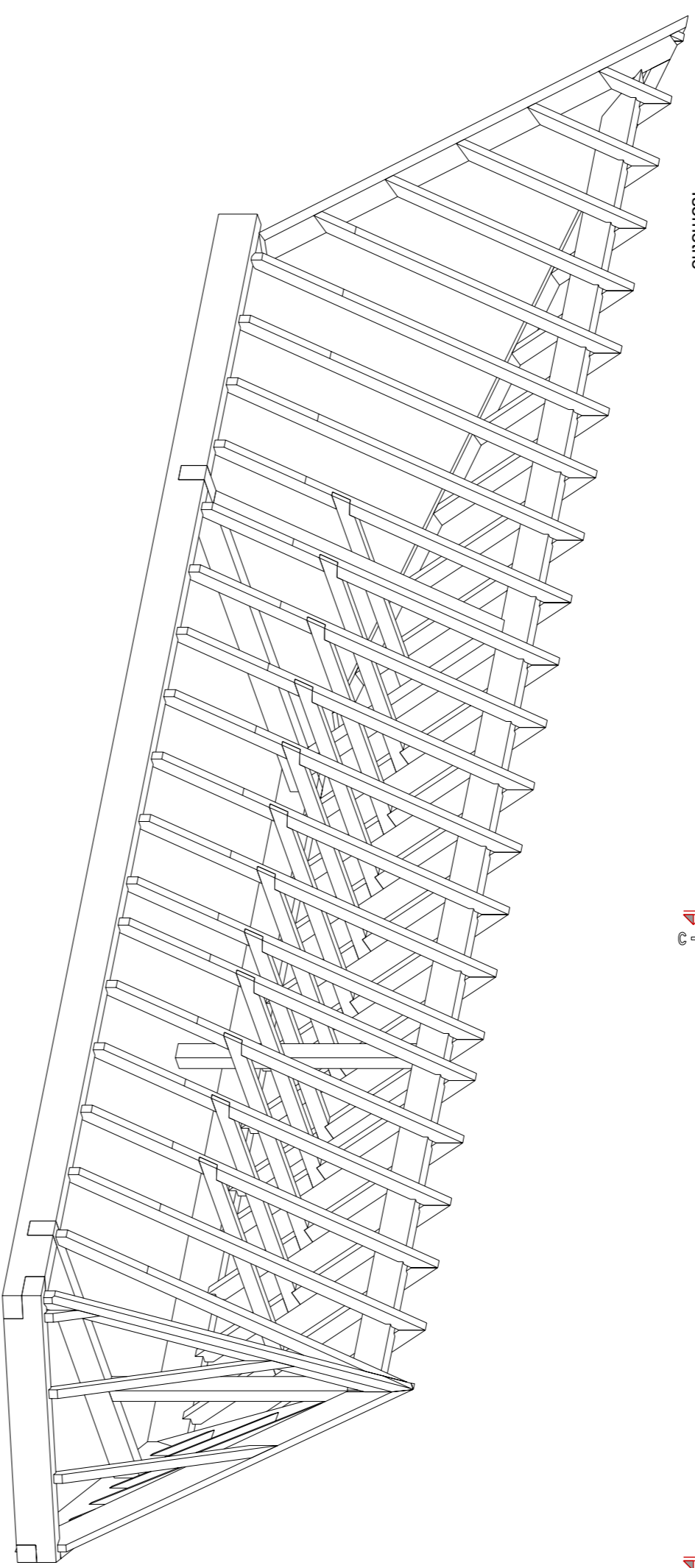
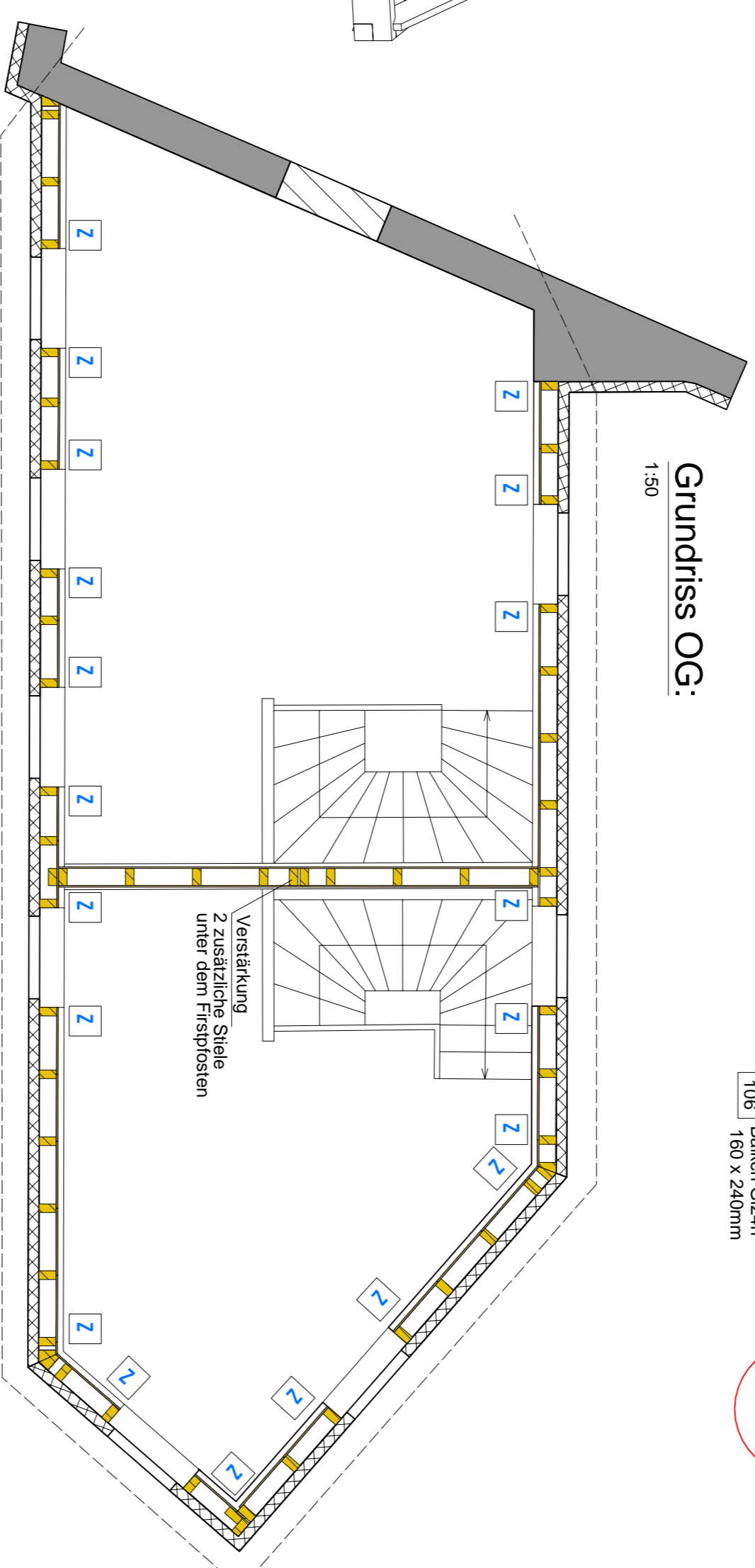


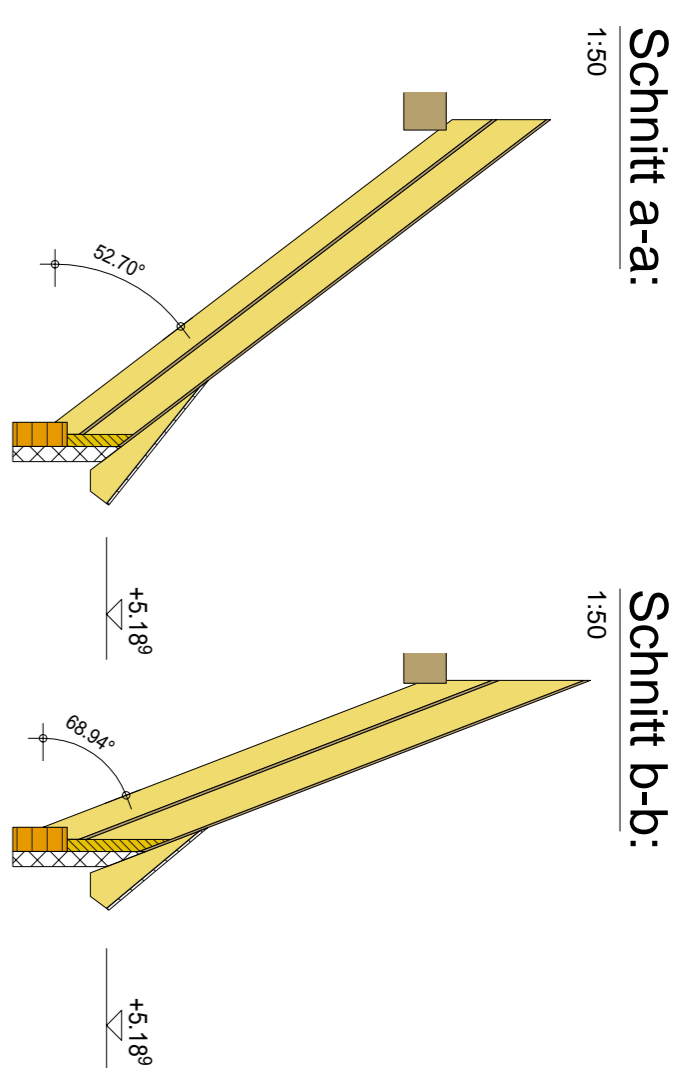
Sparrenlage
1:50



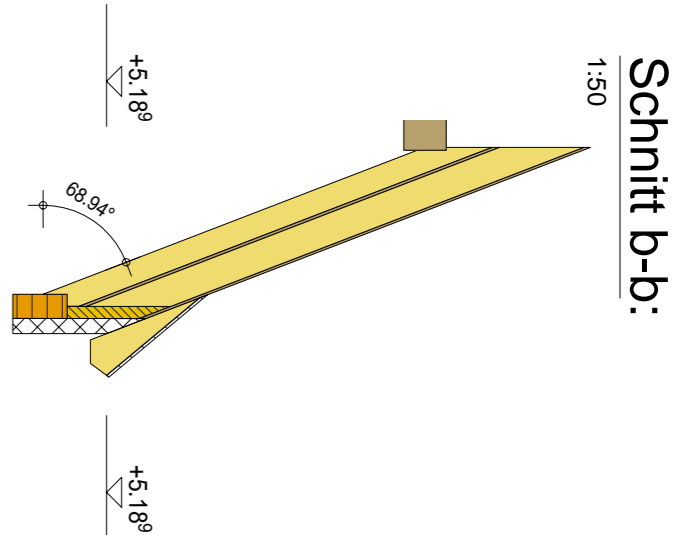
Dachstuhl:
Isometrie



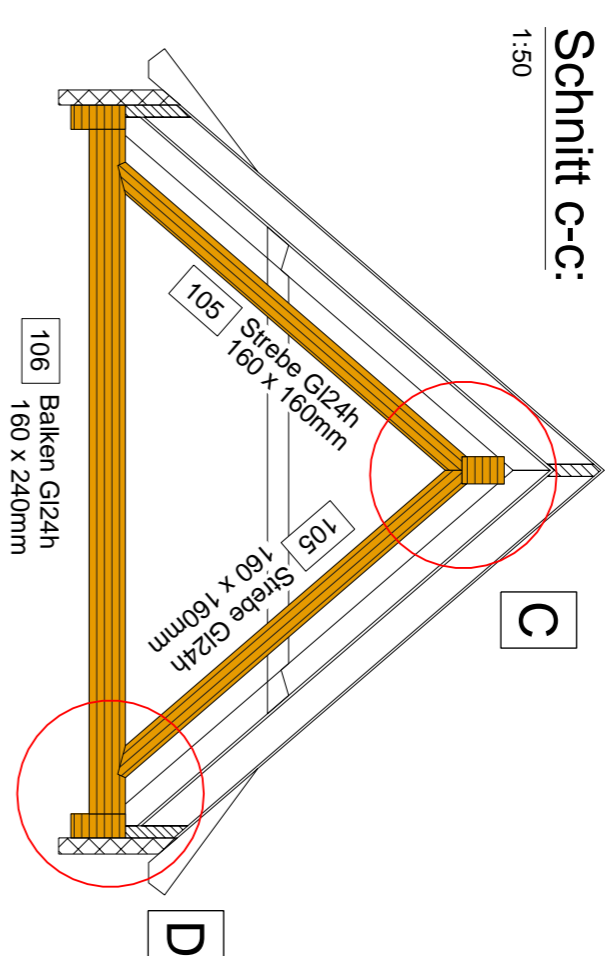
Grundriss OG:
1:50



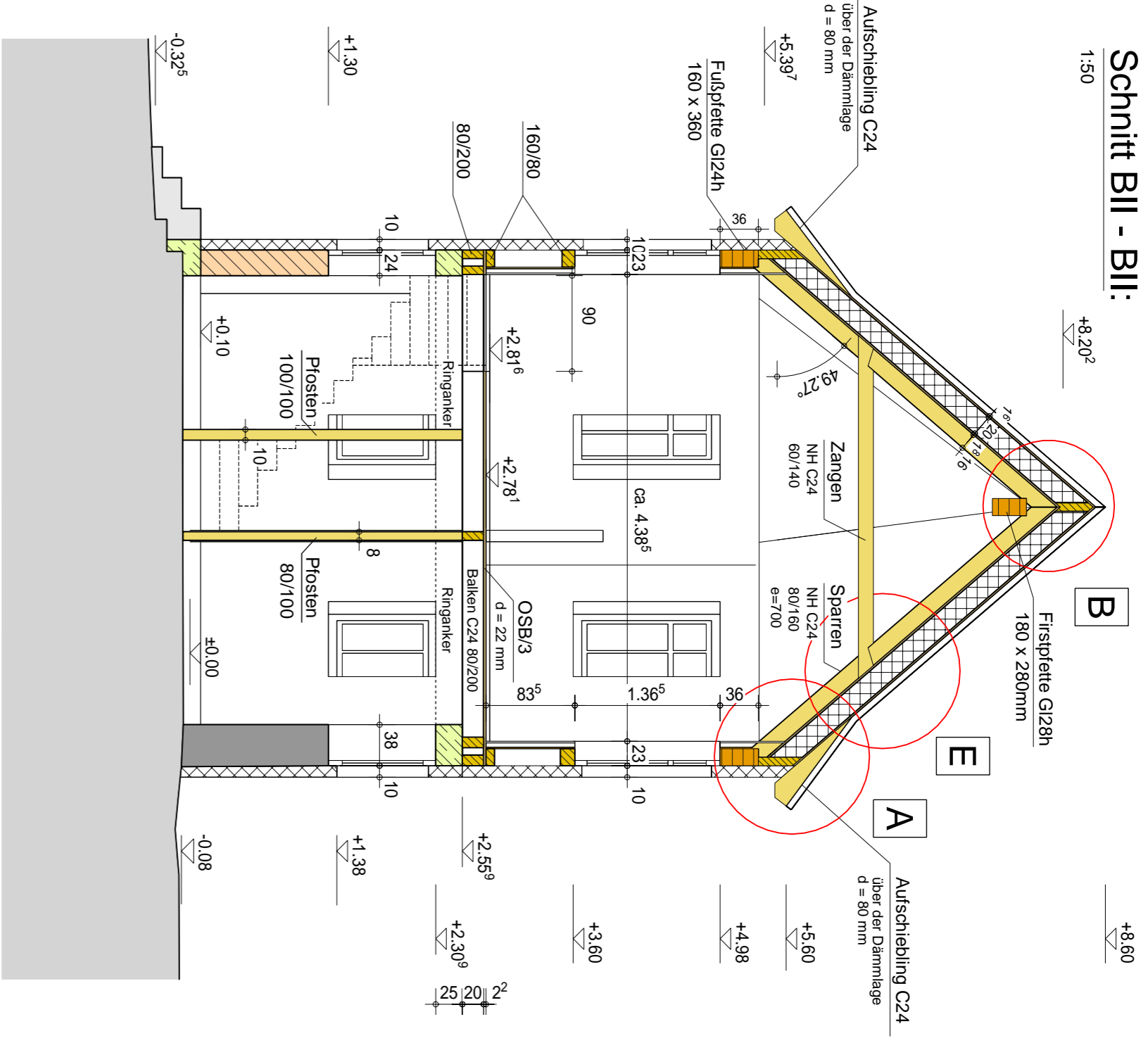
Schnitt a-a:
1:50



Schnitt b-b:
1:50

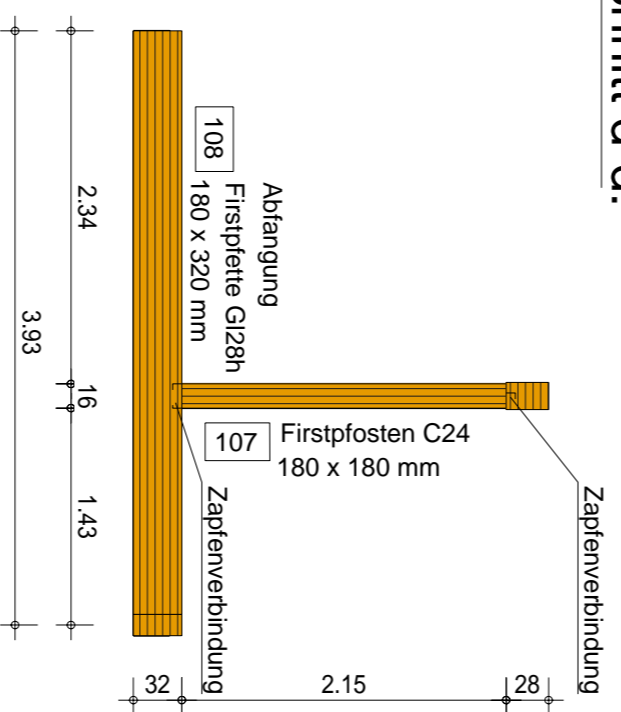


Schnitt c-c:
1:50

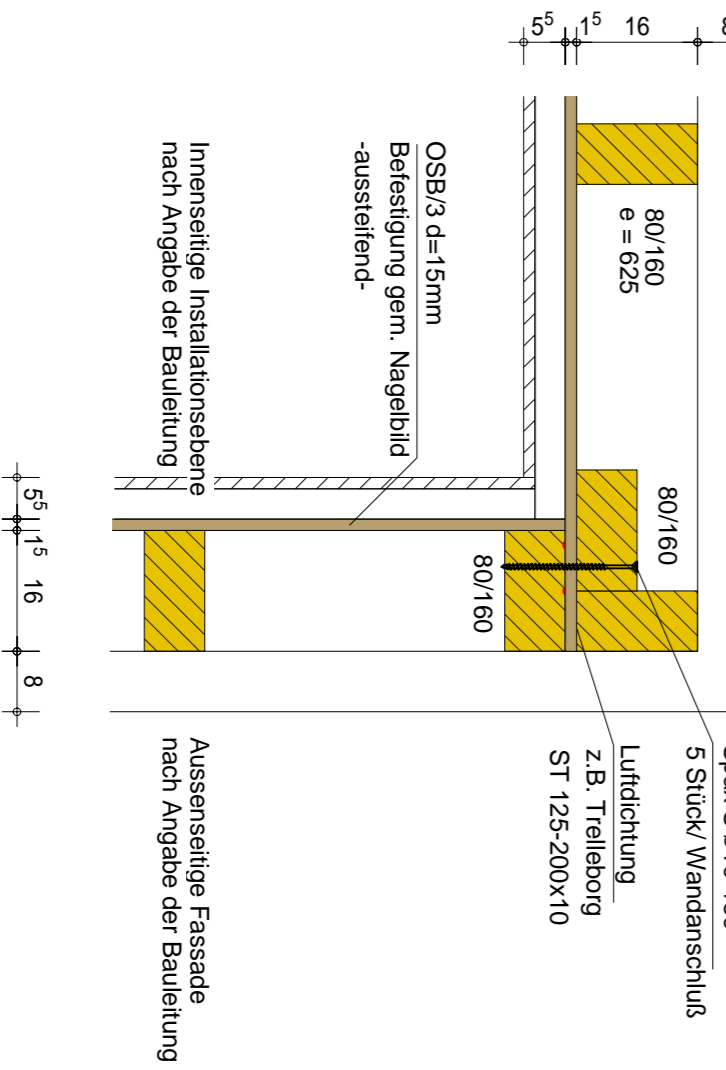


Schnitt BII - BII:
1:50

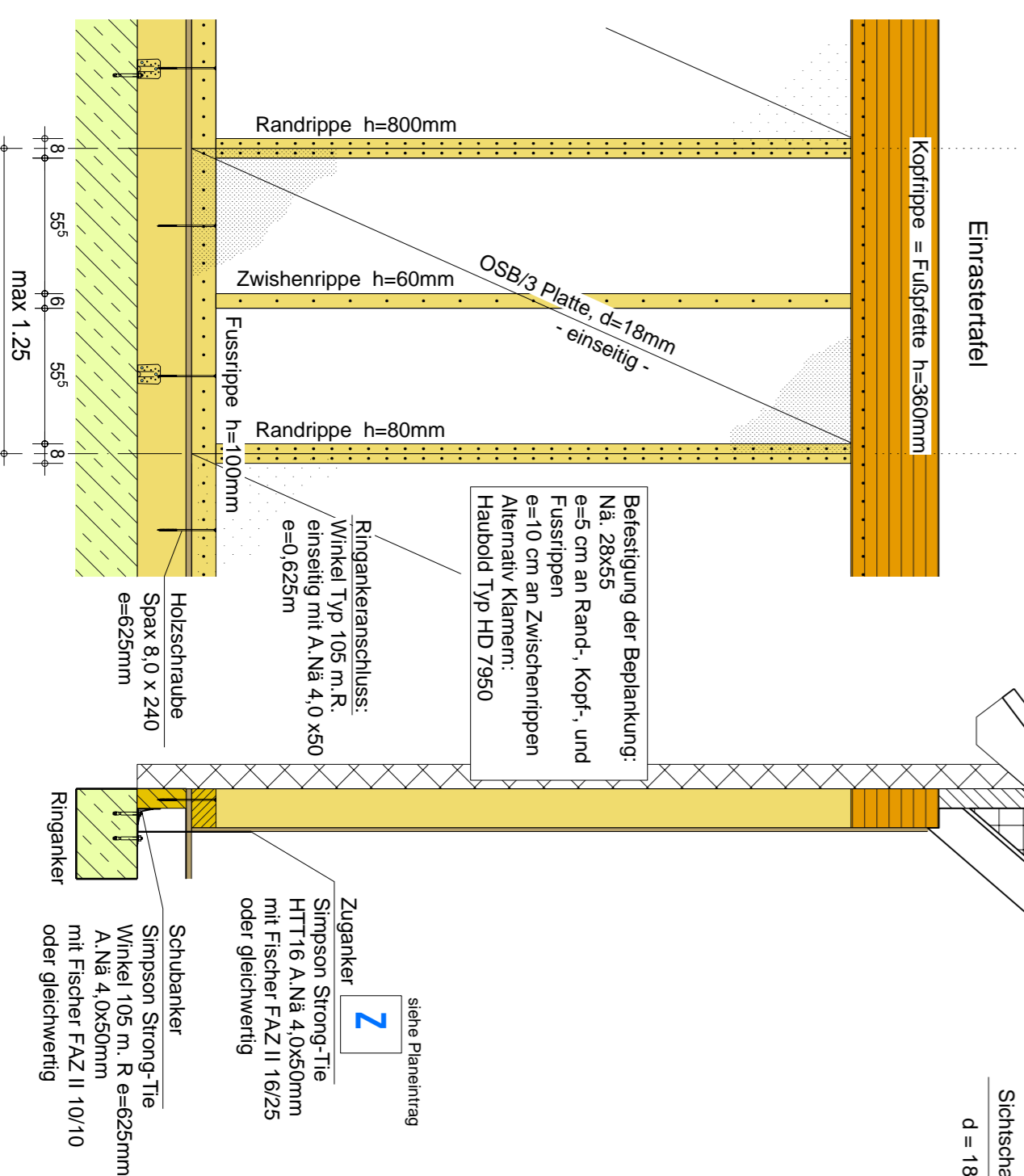
Schnitt d-d:
1:50



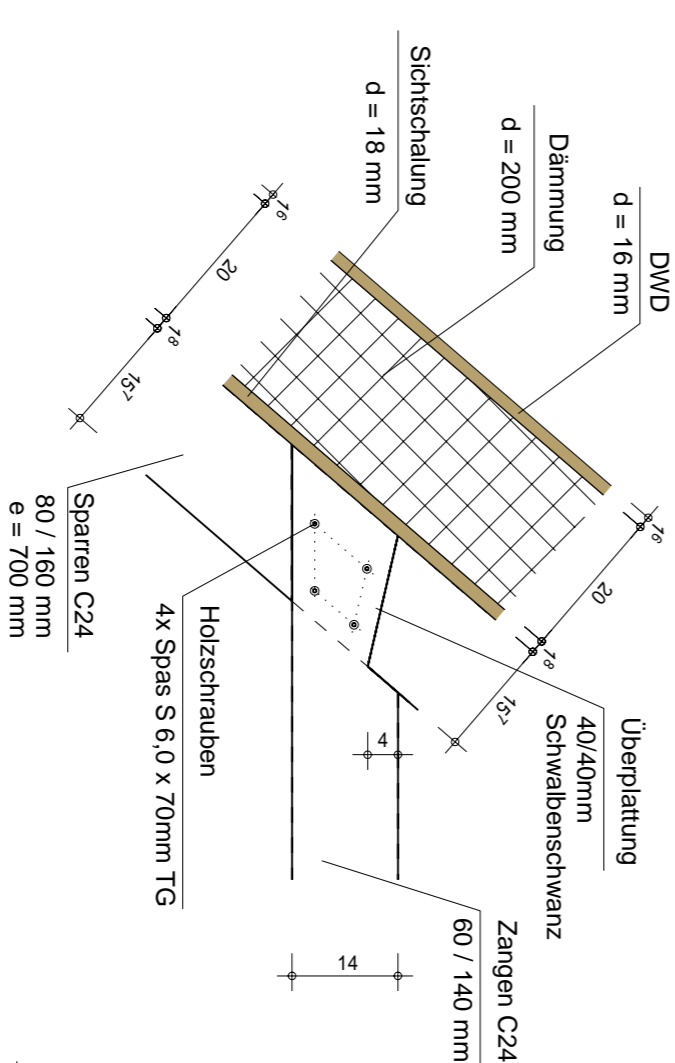
Außenwanddeck Holzrahmenbau
1:10



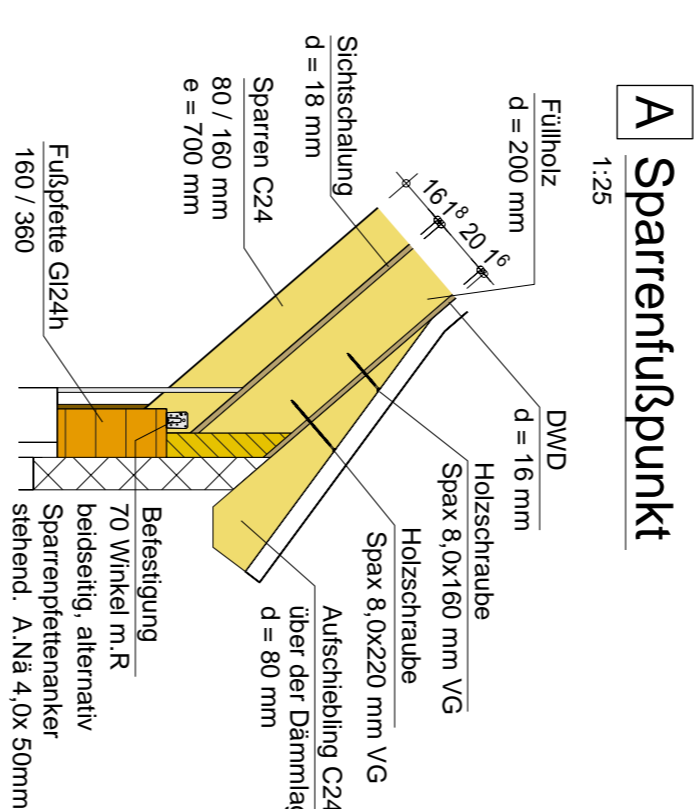
Tragende Wandtafel in Holzrahmenbauweise
1:25



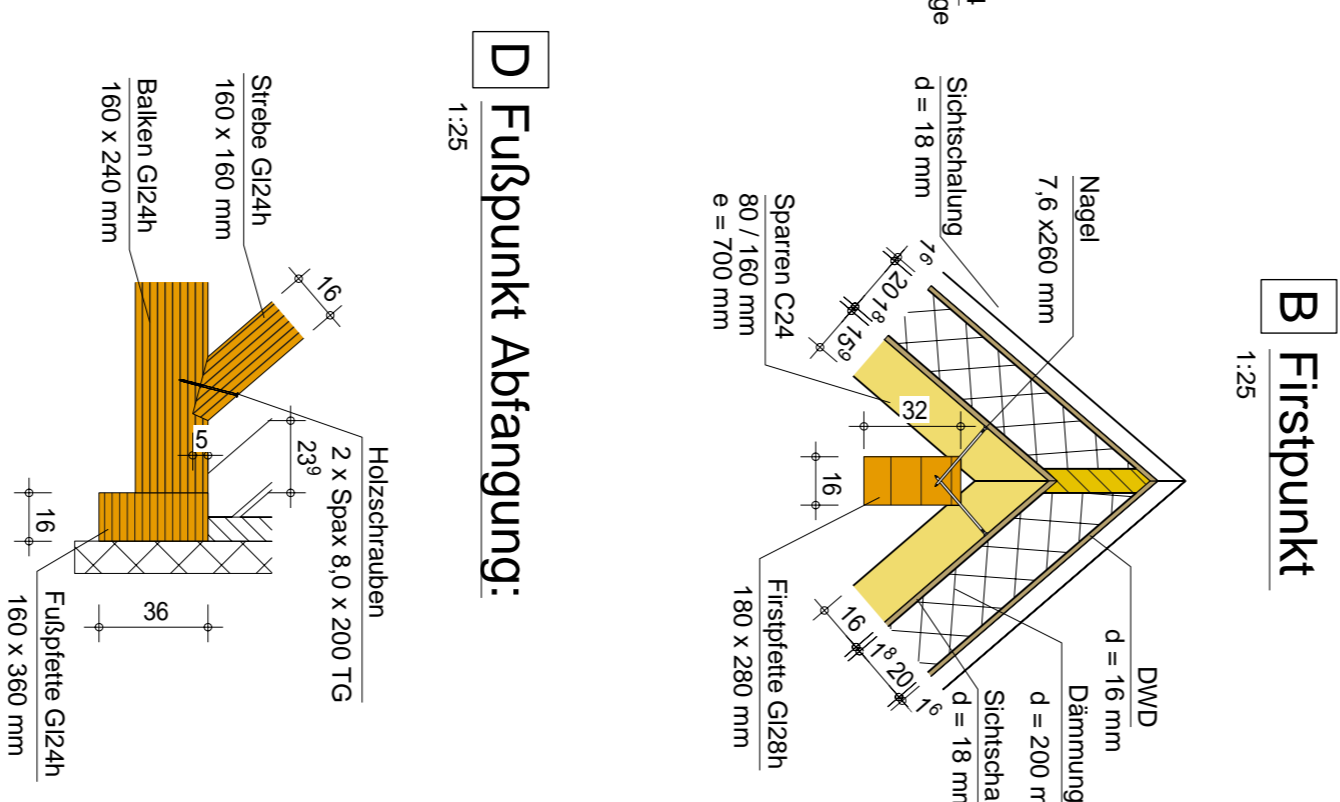
Zangenanschluss:
1:10



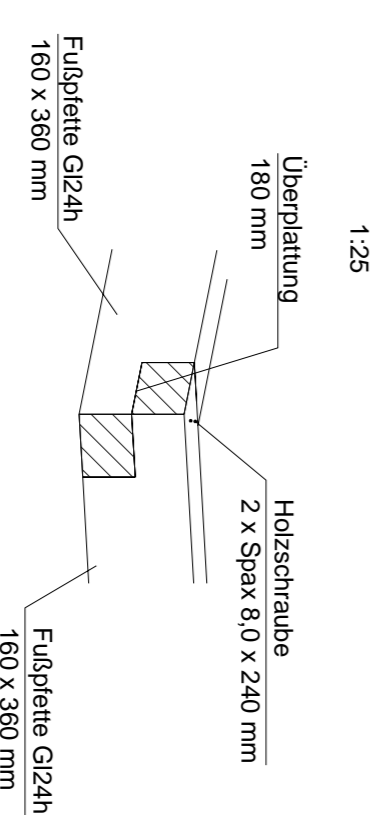
Abfängung - Fristrippe:
1:25



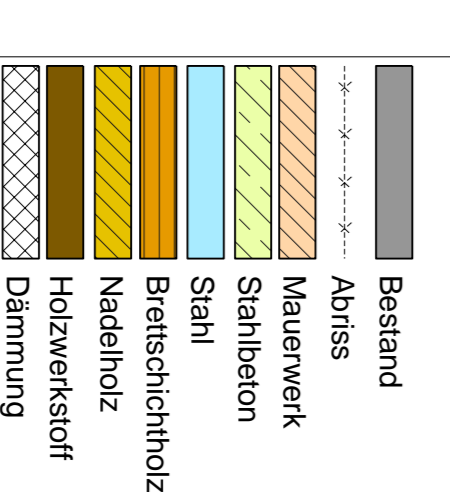
Fußpunkt Abfängung:
1:25



Eckausbildung Fußrippe:
1:25



Legende



Alle nicht näher bezeichneten Hölzer in NH C 24

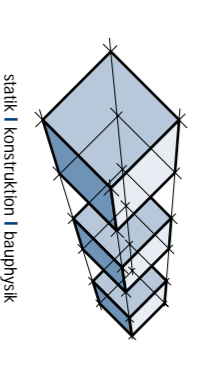
BAUSTOFFE:

Bauholz: NH C24, DIN 4074
Brettschichtholz: GL24h, DIN 1052
Stahlteile: S235 JR

Projekt: Sparrenlage, Balkenlage über OG, Schnitt Umbau eines Winzerhofes

Bauherr: Wintzer & Wintzer GbR, 76833 Frankweiler

Ingenieurbüro von Fragstein
Hauptstrasse 23
76857 Ramberg
Tel. 06345-949958
Fax: 06345-953824
info@von-fragstein.com
www.von-fragstein.com



Nr.	Datum	gez.	Änderung
a			
b			
c			

Plan ist nur gültig in Verbindung mit dem Werkplan des Architekten